

2760 GeV PbPb

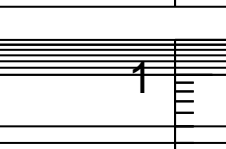
Energy loss

Per trigger yield ($|\eta| < 1.0, 8 < p_T^{\text{trig}} < 15 \text{ GeV}, 8 < p_T^{\text{assoc}} < 10 \text{ GeV}, 60\text{-}90\%$)

Epos (LHC)

Epos 1.99.crmc.1.7.0-hi

mcplots.cern.ch (arXiv:1306.3436)
Rivet 2.7.0, $\geq 10k$ events



Ratio to Epos (LHC)

0

0.5

1